

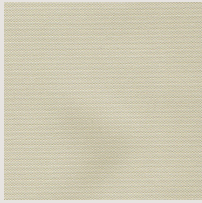
The background of the advertisement features several large, diagonal swatches of fabric in various shades of beige and cream, showcasing a fine, woven texture. On the left side, there is a vertical arrangement of botanical elements, including green leaves and clusters of small, round, pinkish-white berries, possibly from a dogwood tree, adding a natural and organic feel to the composition.

Bancroft
SOFT FURNISHINGS

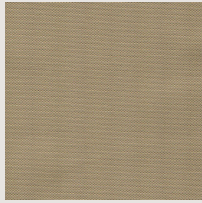
ROMA FR BLACKOUT

Softly textured in a muted pastel palette

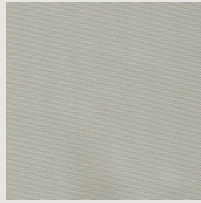
WWW.BANCROFT-FABRICS.COM / 01274 518888



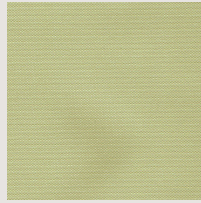
Roma - Beige



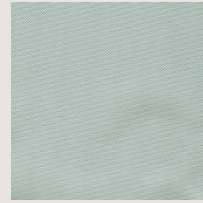
Roma - Caramel



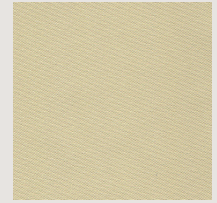
Roma - Grey



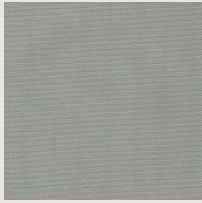
Roma - Olive



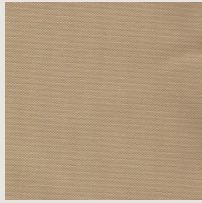
Roma - Pale Blue



Roma - Sand



Roma - Slate



Roma - Stone

With a soft textured woven look **Roma** washable Blackout is a welcome addition to our range. Available in contemporary muted pastel tones, with a durable finish and essential light exclusion to satisfy all needs.





BANCROFT - FOR HOTEL & LEISURE, CRUISE, HEALTHCARE & EDUCATIONAL INTERIORS

ROMA FR BLACKOUT

DESIGN	Roma FR Blackout
PRODUCT CODE	7040
USAGE	Drapery
COMPOSITION	100% Polyester
WEIGHT	428gsm
WIDTH	280cm & 140cm
CARE INSTRUCTIONS	
FR STANDARDS	BS 5867 PT 2B, IMO, EN 13773
COLOUR FASTNESS	5/6
<p>Important - We cannot guarantee an exact shade match against samples between production batches, slight variations are inevitable with the print process and on different base cloths. Due to legislation, tests methods, standards and specifications may differ from the above, please refer to the price list or call our sales desk for confirmation of the most current specifications.</p>	