

The image features six rolls of fabric standing vertically against a light grey background. Each roll has a different color: light grey, blue, cream, maroon, sage green, and teal. The top of each roll is wrapped in brown paper. The fabric on each roll is folded back to show two different shades of the same color, demonstrating the 'double-sided' feature. In the bottom left corner, there is a small green plant with long, narrow leaves. The Bancroft logo is in the top left, and the product name and description are in the center. The website and phone number are at the bottom.

Bancroft
SOFT FURNISHINGS

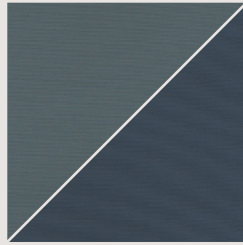
PAROS DOUBLE-SIDED FR BLACKOUT

Dual-faced with a lighted & darker side
for a smart look both inside & out

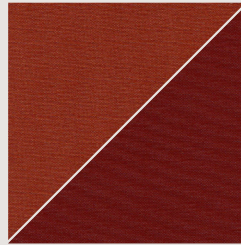
WWW.BANCROFT-FABRICS.COM / 01274 518888



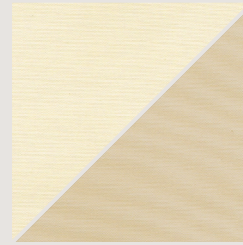
Paros - Admiral



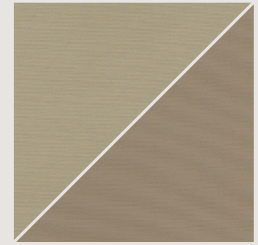
Paros - Airforce



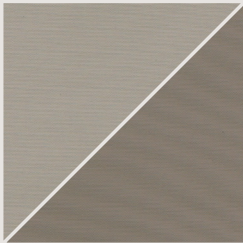
Paros - Brick Red



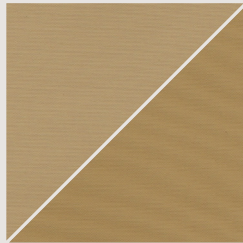
Paros - Buttermilk



Paros - Clay



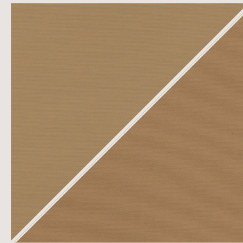
Paros - Cloud



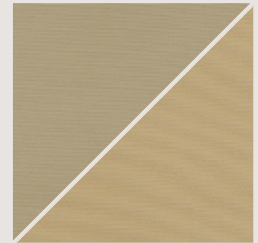
Paros - Desert



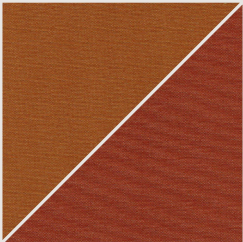
Paros - Fern



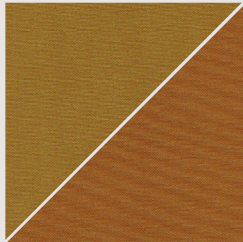
Paros - Latte



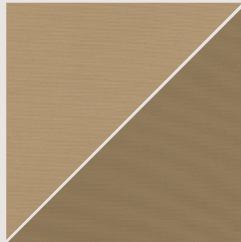
Paros - Linen



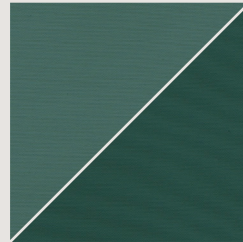
Paros - Marmalade



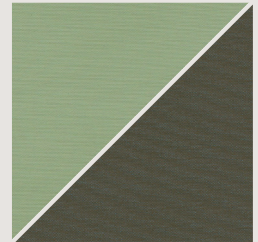
Paros - Medallion



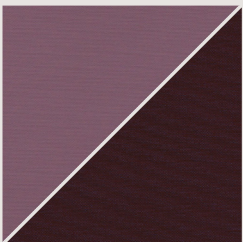
Paros - Mocha



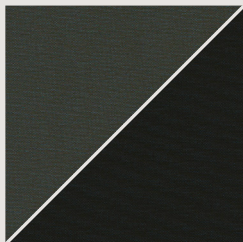
Paros - Peacock



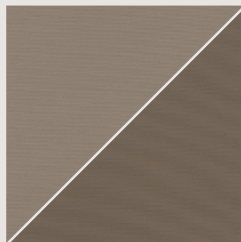
Paros - Pistachio



Paros - Plum

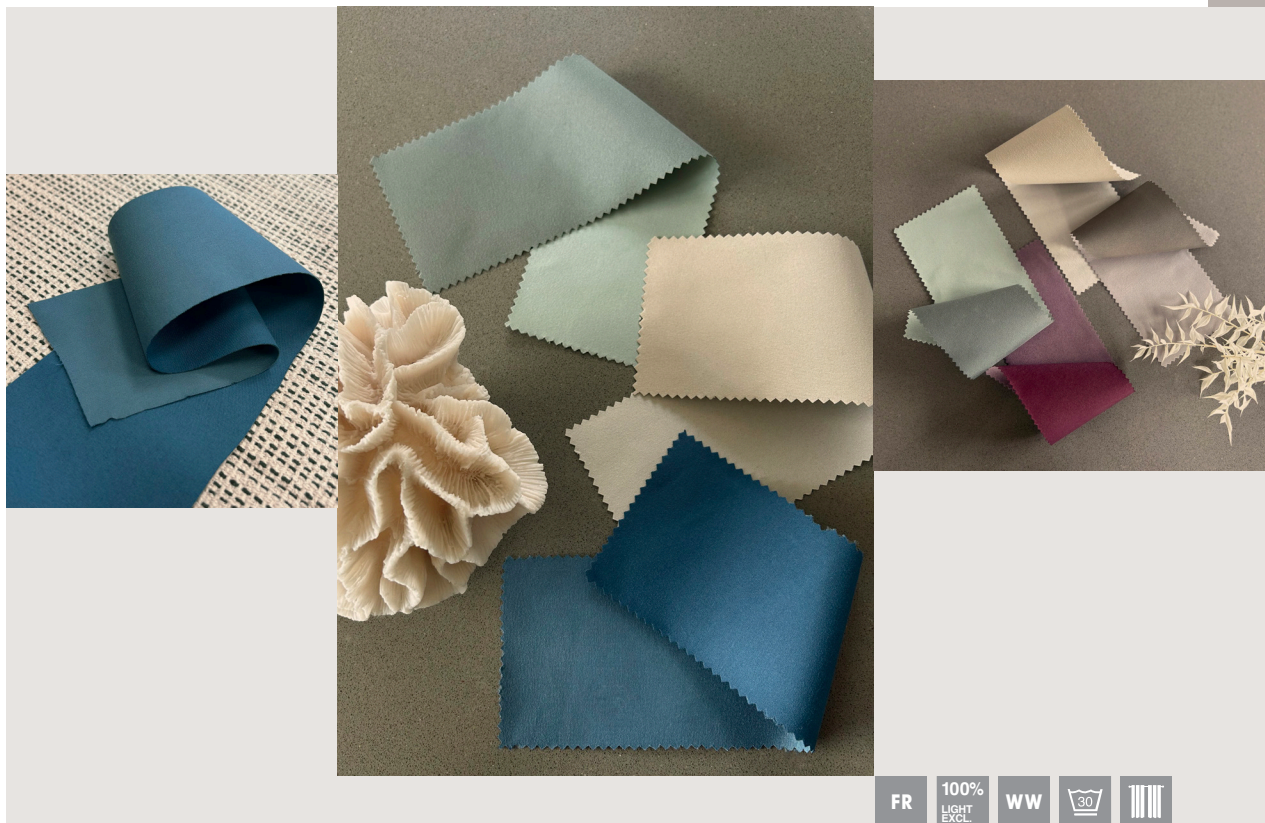


Paros - Shadow



Paros - Silver Birch

Paros is a dual-faced blackout fabric with the same texture in two different colours, a lighter and darker side.
If you are unsure which face colour applies to your project, please refer to your specifier or designer for clarification.



The appeal of double-sided blackout fabric continues to grow and we can understand why, it retains all the benefits of a 100% blackout but the extra coloured side adds to the overall smartness of the finished curtain. Attractive and colourful both inside and out, they are also worth considering for room dividers and panels.

Paros Double-Sided FR Blackout is a dual-faced plain fabric where you choose the lighter or darker shade for the face, leaving the co-ordinating colour for the reverse. The palette includes enticing soft neutrals, Latte, & Clay, with sophisticated Pistachio & Fern Greens, right through to warm Mocha & Brick Red, rich Peacock & Admiral Blue - 18 fashionable colour combos giving 36 exciting options.

With a high spec Paros passes BS5867 PT2:B, EN13773 & IMO making it suitable for contract curtains in Hospitality, Cruise and Care Home Interiors.

PAROS DOUBLE-SIDED FR BLACKOUT

DESIGN	Paros Double-Sided FR Blackout
PRODUCT CODE	7114
USAGE	Drapery
COMPOSITION	100% Polyester
WEIGHT	290gsm
WIDTH	280cm & 140cm
CARE INSTRUCTIONS	
FR STANDARDS	BS5867 PT2:B, EN 13773, IMO
LIGHT FASTNESS	5/6
<p>Important - We cannot guarantee an exact shade match against samples between production batches, slight variations are inevitable with the print process and on different base cloths. Due to legislation, tests methods, standards and specifications may differ from the above, please refer to the price list or call our sales desk for confirmation of the most current specifications.</p>	