



**Bancroft**  
SOFT FURNISHINGS

## OLYMPIA FR BLACKOUT

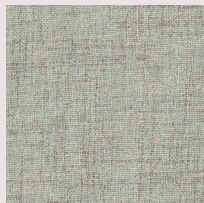
With a natural linen-look & subtle tonal fleck to enhance the beautiful texture

[WWW.BANCROFT-FABRICS.COM](http://WWW.BANCROFT-FABRICS.COM) / 01274 518888

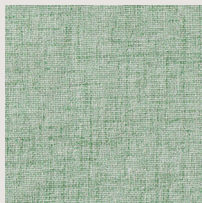




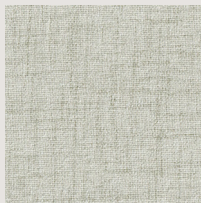
Olympia - Fern



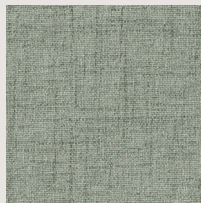
Olympia - Fog



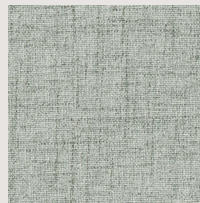
Olympia - Mint



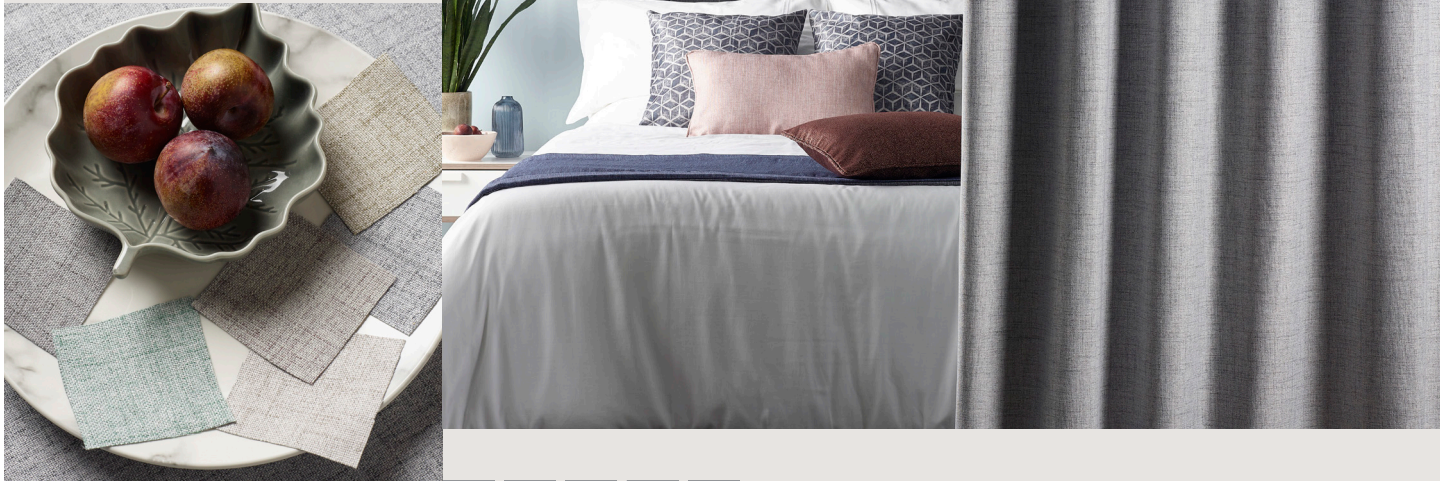
Olympia - Pearl



Olympia - Shadow



Olympia - Storm



This decorative 100% FR Blackout comes in 6 on-trend pastel shades for a fresh look and feel in hospitality and healthcare interiors. Soft to the touch its great for building inviting textural layers when used alongside our voiles and can easily be integrated into any scheme.

Although **Olympia** has a delicate appearance it is durable and robust meeting BS5867 PT2:B and EN 13773. Available in both wide width and narrow width with a light fastness of 6, its stocked in the UK for next day delivery subject to requirements



OLYMPIA FR BLACKOUT

DESIGN	Olympia FR Blackout
PRODUCT CODE	7112
USAGE	Drapery
COMPOSITION	100% Polyester
WEIGHT	454gsm
WIDTH	280cm & 140cm
CARE INSTRUCTIONS	
FR STANDARDS	BS 5867 PT 2B, EN 13773
LIGHT FASTNESS	6
<p><b>Important</b> - We cannot guarantee an exact shade match against samples between production batches, slight variations are inevitable with the print process and on different base cloths. Due to legislation, tests methods, standards and specifications may differ from the above, please refer to the price list or call our sales desk for confirmation of the most current specifications.</p>	