

**Bancroft**  
SOFT FURNISHINGS

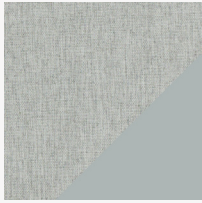


## NAXOS FR BLACKOUT

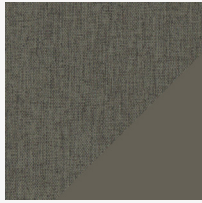
Double sided for a smart look both inside & out

[WWW.BANCROFT-FABRICS.COM](http://WWW.BANCROFT-FABRICS.COM) / 01274 518888





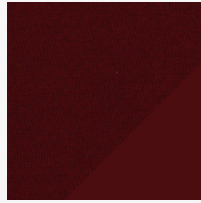
Naxos - Ash



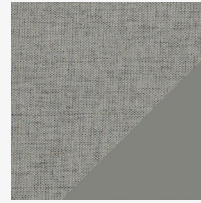
Naxos - Bark



Naxos - Barley



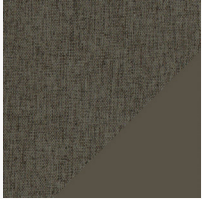
Naxos - Berry



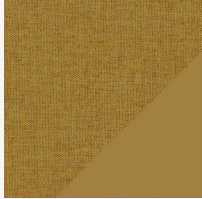
Naxos - Cobblestone



Naxos - Driftwood



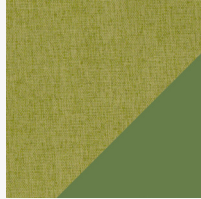
Naxos - Fossil



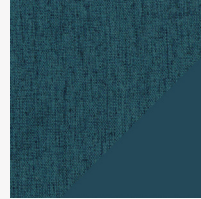
Naxos - Gold



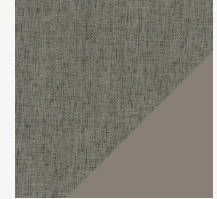
Naxos - Ivory



Naxos - Leaf



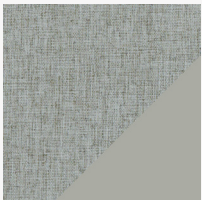
Naxos - Marine



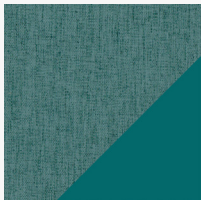
Naxos - Mushroom



Naxos - Oyster



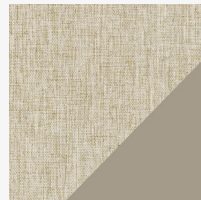
Naxos - Pearl



Naxos - Sky



Naxos - Slate



Naxos - Stone



Naxos - Wheat



This is a double sided fabric, swatches above show






A smart double sided FR Blackout that gives a beautiful look from both the inside and the outside. **Naxos** offers a desirable solution for curtains where both sides need to look attractive and colourful. With a delicate linen look texture bonded to a smooth plain colour, at 280cm its perfect for wide width curtaining and partitioning panels.

An extensive palette includes enticing neutrals, cream, beige, taupe and grey and bright pops of colour, marine, sky blue, berry, leaf and gold for bolder higher contrast schemes.

A high performance fabric **Naxos** meets BS5867 PT2:B, EN 13773, IMO and B1 for all contract projects.

NAXOS FR BLACKOUT

DESIGN	Naxos FR Blackout
PRODUCT CODE	7113
USAGE	Drapery
COMPOSITION	100% Polyester
WEIGHT	400gsm
WIDTH	280cm & 140cm
CARE INSTRUCTIONS	
FR STANDARDS	BS5867 PT:2B, EN 13773, IMO, B1
LIGHT FASTNESS	6
<p><b>Important</b> - We cannot guarantee an exact shade match against samples between production batches, slight variations are inevitable with the print process and on different base cloths. Due to legislation, tests methods, standards and specifications may differ from the above, please refer to the price list or call our sales desk for confirmation of the most current specifications.</p>	