

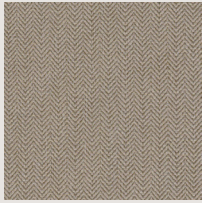
A photograph of a branch with white and pink berries in a vase, positioned next to a dark blue fabric with a herringbone texture. The fabric is draped over a surface, and the berries are in a vase on the left. The background is a bright window.

Bancroft
SOFT FURNISHINGS

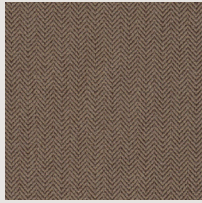
MONTANA FR BLACKOUT

Luxurious herringbone textured finish

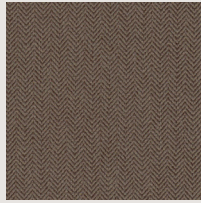
WWW.BANCROFT-FABRICS.COM / 01274 518888



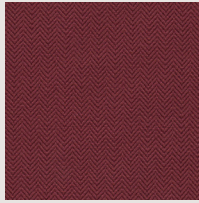
Montana - Beige



Montana - Brown



Montana - Chocolate



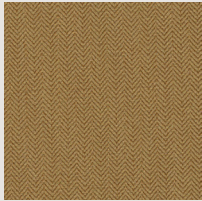
Montana - Claret



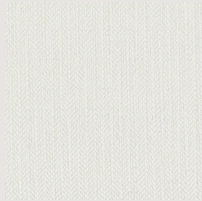
Montana - Copper



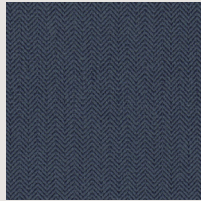
Montana - Cream



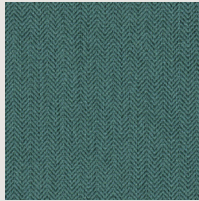
Montana - Gold



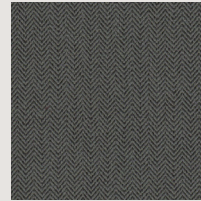
Montana - Ivory



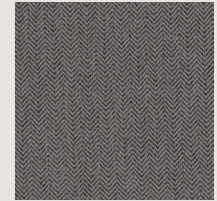
Montana - Navy



Montana - Ocean



Montana - Petrol



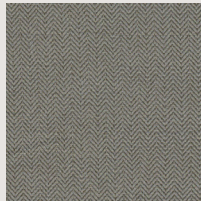
Montana - Pewter



Montana - Pistachio



Montana - Purple



Montana - Stone





FR

IMO

WW


30



A 280cm wide width blackout fabric with a luxurious herringbone texture and a durable finish.

Montana has a soft drape and is Flame Retardant to meet EN, BS and IMO standards. It comes in a usable palette of soft greys and neutrals, vibrant reds, blues and purples, making it an ideal product for all high end contract projects.

MONTANA FR BLACKOUT

DESIGN	Montana FR Blackout
PRODUCT CODE	7039
USAGE	Drapery
COMPOSITION	100% Polyester
WEIGHT	380gsm
WIDTH	280cm
CARE INSTRUCTIONS	
FR STANDARDS	BS 5867 PT 2B, IMO, EN 13773
COLOUR FASTNESS	5/6
<ul style="list-style-type: none">• Please note the herringbone runs selvedge to selvedge	
<p>Important - We cannot guarantee an exact shade match against samples between production batches, slight variations are inevitable with the print process and on different base cloths. Due to legislation, tests methods, standards and specifications may differ from the above, please refer to the price list or call our sales desk for confirmation of the most current specifications.</p>	